



Apt 85 Islington Wharf, 153 Great Ancoats Street, New Islington, M4 6DN

EWS1 Available/Mortgage Buyers Invited. Jordan Fishwick are pleased to offer this stunning TWO BEDROOM third floor apartment in the iconic Islington Wharf, New Islington. The apartment offers stunning views across the canal and nearby locks, and offers easy access to Ancoats Marina and Urban Exchange shops and gym, along with New Islington tram stop being just 5 minutes walk away. The apartment briefly comprises of: entrance hall, living room/kitchen, two double bedrooms and jack and jill bathroom. There is an underground parking space included. There is a sunny roof garden available to residents, lifts to all floors and a daytime concierge/caretaker on site. NO ONWARD CHAIN.

Offers Over £225,000

Viewing arrangements

Viewing strictly by appointment through the agent
245 Deansgate, Manchester, M3 4EN 0161 833 9499 opt 3

Entrance Hall

Wooden flooring. Access to all rooms. Utility cupboard with space for washer/dryer.

Living Room/Kitchen

26'2" x 14'4"

Range of wall and base units with complimentary worktops over. Cooker with induction hob and extractor over. Integrated dishwasher, fridge and freezer. Wooden flooring. TV/Telephone point. Spotlights. Dual aspect windows over looking Great Ancoats canal. Wall mounted heater.

Bedroom One

12'9" x 8'9"

Spotlights. Fitted carpets. TV point. Wall mounted heater. Access to the main bathroom.

Bedroom Two

10'2" x 8'9"

Celing light. Fitted carpets. TV point. Wall mounted heater.

Bathroom

Partially tiled. Bath with mixer shower over. Floating sink with mixer tap. Low level W.C. Vanity mirror.

Externally

Lifts to all floors. Secure underground parking space. Residents only roof garden. Daytime on-site caretaker/concierge.

Additional Information

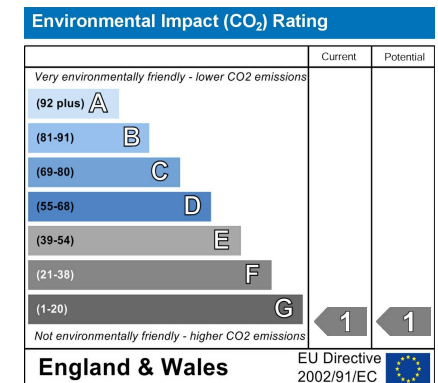
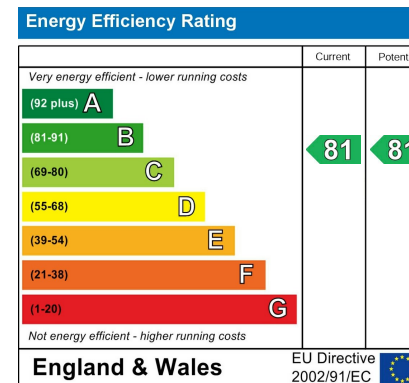
Lease - 250 years from 2006

Ground rent - £200 per annum

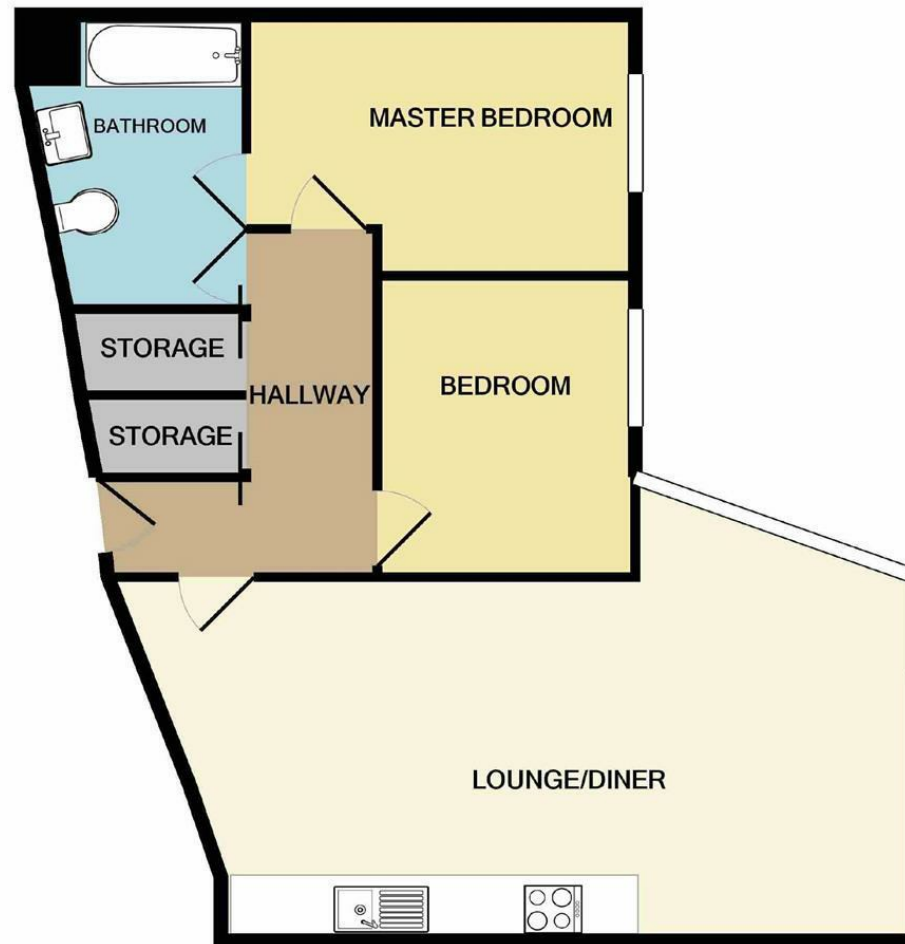
Service charges - £2320.26 pa

Agents Notes

To be able to purchase a property in the United Kingdom all agents have a legal requirement to conduct Identity checks on all customers involved in the transaction to fulfil their obligations under Anti Money Laundering regulations. We outsource this check to a third party and a charge will apply. Ask the branch for further details.







Measurements are approximate. Not to scale. Illustrative purposes only
Made with Metropix ©2021



These particulars are believed to be accurate but they are not guaranteed and do not form a contract. Neither Jordan Fishwick nor the vendor or lessor accept any responsibility in respect of these particulars, which are not intended to be statements or representations of fact and any intending purchaser or lessee must satisfy himself by inspection or otherwise as to the correctness of each of the statements contained in these particulars. Any floorplans on this brochure are for illustrative purposes only and are not necessarily to scale.

Offices at: Chorlton, Didsbury, Disley, Hale, Glossop, Macclesfield, Manchester Deansgate, Manchester Whitworth Street, New Mills, Sale, Wilmslow and Withington

245 Deansgate, Manchester, M3 4EN

0161 833 9499 opt 3

manchester@jordanfishwick.co.uk

www.jordanfishwick.co.uk

